

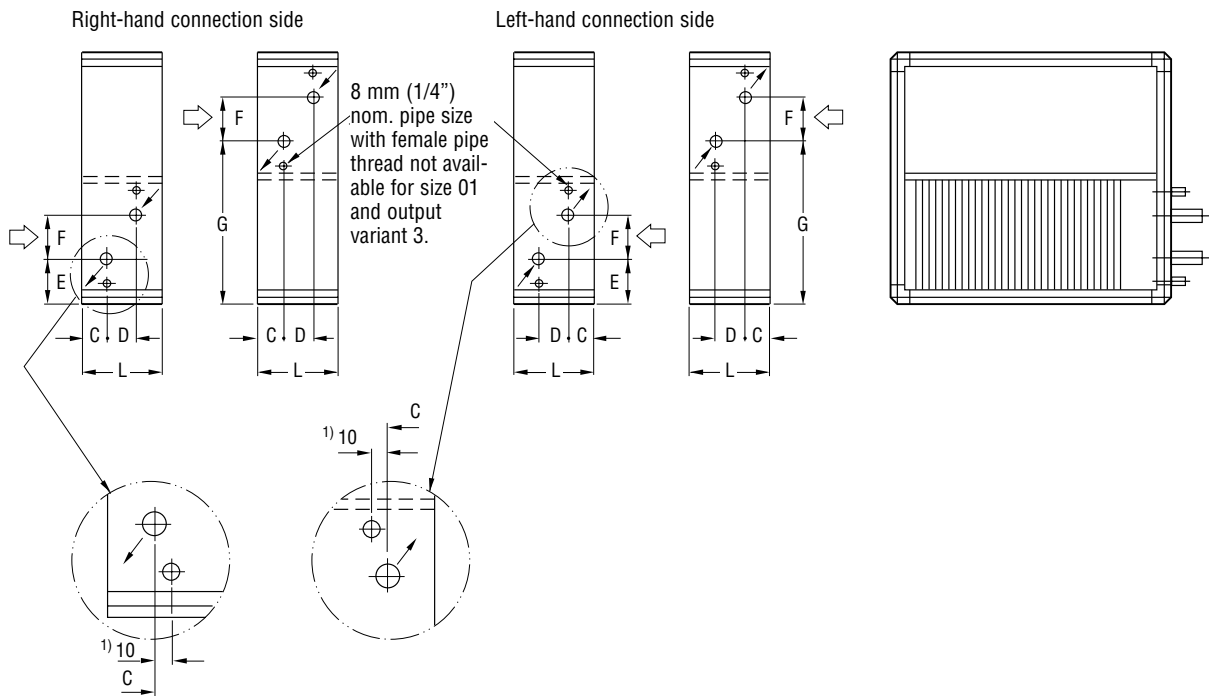
Pipe connections

Pipe connections in general

The following pages give the locations of the pipe connections within the unit sections. The locations in relation to the end wall of an air handling unit which is

divided into blocks can be obtained by adding together the block lengths (see the respective size). For a factory-assembled unit, reduce the calculated length by 104 mm per block joint.

ECEE Air heater for hot water



1) The 10 mm dimension applies to sizes 08 and 09, with output variants 1 and 3.

Output variant 1

Size	Output variant 1					Nom pipe size	Volume, litres
	C	D	E	F	G		
01	83	0	114	200	454	15	1
02	83	36	176	120	576	25	2
03	83	36	186	200	686	25	3
04	83	36	236	200	786	25	3
05	83	36	322	200	972	25	5
06	86	43	369	200	1119	32	7
07	86	43	419	200	1269	32	8
08	108	68	469	200	1419	50	13
09	108	68	519	200	1619	50	15

Output variant 3

Size	Output variant 3					Nom pipe size	Volume, litres
	C	D	E	F	G		
01	83	0	114	200	454	15	1
02	83	0	94	267	494	15	2
03	83	36	186	200	686	25	3
04	83	36	236	200	786	25	3
05	83	36	322	200	972	25	5
06	86	36	369	200	1119	25	6
07	86	36	419	200	1269	25	7
08	118	43	469	200	1419	32	10
09	108	68	519	200	1619	50	15

Output variant 5

Size	Output variant 5					Nom pipe size	Volume, litres
	C	D	E	F	G		
01	83	29	114	217	454	15	2
02	83	58	176	120	576	25	3
03	83	58	186	200	686	25	4
04	83	58	236	200	786	25	6
05	71	58	322	200	972	25	8
06	71	58	369	200	1119	25	10
07	98	58	419	200	1269	32	14
08	103	68	469	200	1419	50	20
09	103	68	519	200	1619	50	24

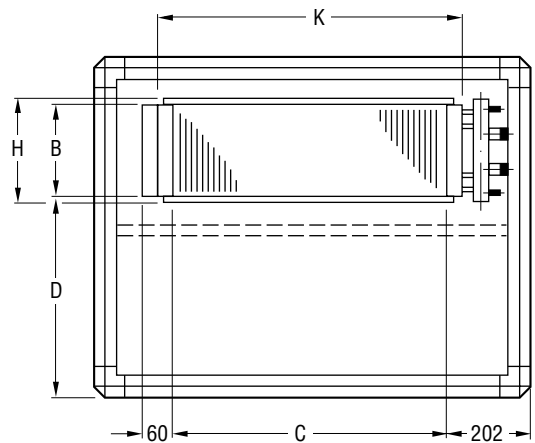
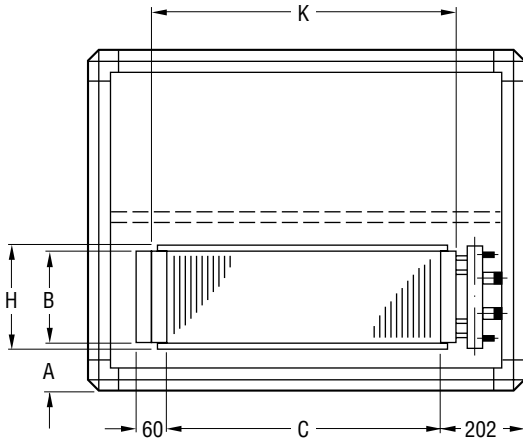
Lengths and weights for output variants 1, 3 and 5

Size	L		Wgt., kg Cu/Al Output var.		
	c = 1,3	c = 5	1	3	5
01	200	200	7	7	10
02	200	200	6	6	10
03	200	200	9	9	15
04	200	200	12	12	20
05	200	200	20	20	31
06	200	200	36	36	52
07	200	300	43	43	63
08	300	300	51	51	75
09	300	300	63	63	93

Pipe connections

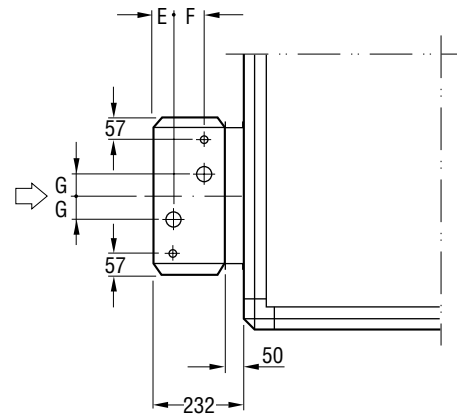
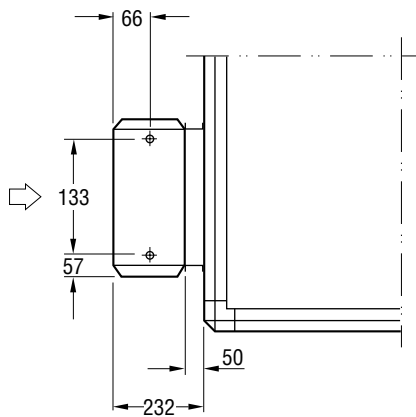
ECEG Air heater for hot water, frost coil.

All dimensions in mm



Size 01

Sizes 02–09



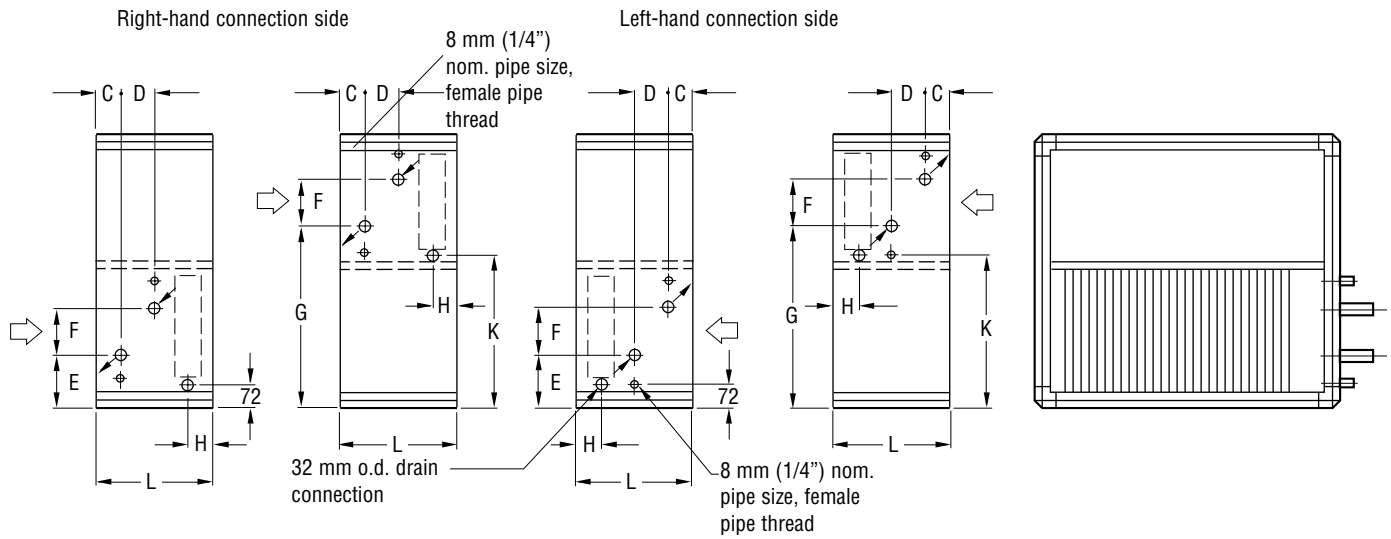
Size	A	B	C	D	E	F	G	Nom. pipe size	Wgt., kg Cu/Al
01	107	200	500	467	–	–	–	15	3
02	87	300	500	487	66	36	60	25	5
03	87	400	600	587	66	36	100	25	6
04	112	400	800	712	66	36	100	25	7
05	87	500	1000	887	66	36	100	25	10
06	87	600	1100	987	66	43	100	32	13
07	162	600	1400	1112	66	43	100	32	16
08	87	800	1600	1187	66	43	100	32	22
09	187	800	1800	1337	56	68	100	50	28

PG joint		Flanged connection	
e = 1		e = 2	
H	K	H	K
B + 38	C + 38	B + 100	C + 100

Pipe connections

ECNN Air cooler for chilled water

All dimensions in mm



Size	K
01	412
02	472
03	572
04	622
05	722
06	822
07	922
08	1022
09	1172

Size	without droplet eliminator		with droplet eliminator		C
	f = 0		f = 1		
	L	H	L	H	
01-04	300	78	500	193	77
05-09	400	80	500	185	100

Output variant 2

Size	Output variant 2						Wgt., kg	
	D	E	F	G	Nom pipe size	Volume litres	Cu/Al	
01	58	168	120	508	25	3	19	
02	58	191	120	590	25	3	22	
03	58	201	200	700	25	4	28	
04	58	250	200	799	25	6	36	
05	58	316	200	966	32	9	45	
06	58	366	200	1116	32	11	61	
07	58	416	200	1266	32	14	73	
08	68	466	200	1416	50	26	87	
09	68	516	200	1616	50	31	103	

Output variant 3

Size	Output variant 3						Wgt., kg	
	D	E	F	G	Nom pipe size	Volume litres	Cu/Al	
01	58	168	120	508	25	3	22	
02	58	191	120	590	25	4	26	
03	58	201	200	700	25	6	33	
04	58	250	200	799	25	8	44	
05	58	316	200	966	32	12	56	
06	68	366	200	1116	32	18	76	
07	68	416	200	1266	50	22	92	
08	68	466	200	1416	50	27	110	
09	68	516	200	1616	50	40	131	

Output variant 4

Size	Output variant 4						Wgt., kg	
	D	E	F	G	Nom pipe size	Volume litres	Cu/Al	
01	87	168	120	508	25	4	25	
02	87	191	120	590	25	5	30	
03	87	201	200	700	25	7	38	
04	87	250	200	799	25	10	51	
05	87	316	200	966	32	16	68	
06	87	366	200	1116	50	22	90	
07	87	416	200	1266	50	28	110	
08	101	466	200	1416	80	41	132	
09	101	516	200	1616	80	49	158	

Output variant 6

Size	Output variant 6						Wgt., kg	
	D	E	F	G	Nom pipe size	Volume litres	Cu/Al	
01	144	168	120	508	25	6	31	
02	144	191	120	590	25	7	37	
03	144	201	200	700	25	10	49	
04	144	250	200	799	32	15	67	
05	144	316	200	966	50	24	89	
06	144	366	200	1116	50	36	118	
07	144	416	200	1266	50	39	145	
08	144	466	200	1416	80	55	175	
09	144	516	200	1616	80	67	211	

Pipe connections

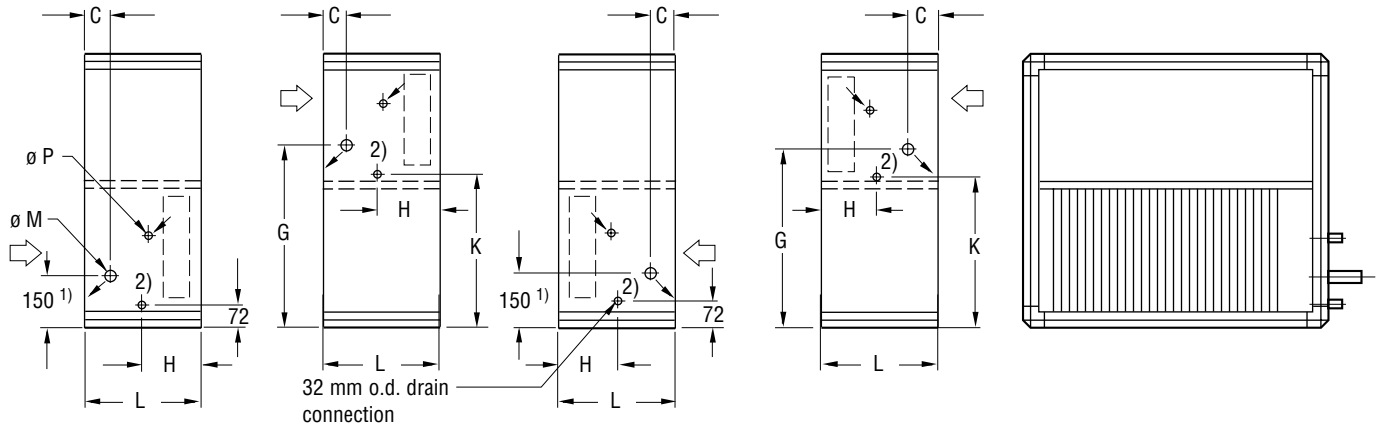
ECNP Air cooler for evaporative refrigerant, 1 output stage

All dimensions in mm

Size 01, output variants 3, 4 and 6, and sizes 02–09, output variants 2, 3, 4 and 6.

Right-hand connection side

Left-hand connection side



- 1) for size 01 = 144 mm
- 2) 32 mm o.d. drain connection

For dimensions, volumes and weights, see next page.

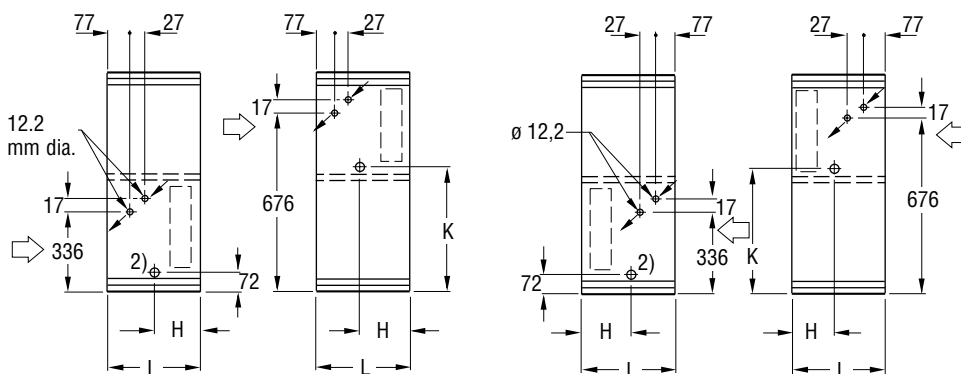
Size	K
01	412
02	472
03	572
04	622
05	722
06	822
07	922
08	1022
09	1172

Size	Without droplet eliminator		With droplet eliminator		C	
	g = 0		g = 1			
	L	H	L	H		
01–04	300	78	500	193	77	Output variant c = 2, 3
05–09	400	80	500	185	100	Output variant c = 2–6
01–04	400	80	500	185	77	Output variant c = 4, 6

Size 01, output variant 2

Right-hand connection side

Left-hand connection side



Pipe connections

ECNP Air cooler for evaporative refrigerant, 1 output stage. All dimensions in mm

Output variant 2

Size	M dia.	Output variant 2			Volume, l	Wgt., kg Cu/Al
		P dia.	G			
01	1)	1)	1)	2	19	
02	1 1/8"	5/8"	550	3	22	
03	1 1/8"	5/8"	650	4	28	
04	1 1/8"	5/8"	700	5	36	
05	1 1/8"	5/8"	800	8	45	
06	1 5/8"	7/8"	900	10	61	
07	1 5/8"	7/8"	1000	13	73	
08	1 5/8"	7/8"	1100	16	87	
09	1 5/8"	7/8"	1250	20	103	

1) See details for size 01, output variant 2 on previous page.

Output variant 4

Size	M dia.	Output variant 4			Volume, l	Wgt., kg Cu/Al
		P dia.	G			
01	1 1/8"	5/8"	484	4	25	
02	1 1/8"	5/8"	550	5	30	
03	1 1/8"	5/8"	650	7	38	
04	1 1/8"	7/8"	700	10	51	
05	1 3/8"	7/8"	800	15	68	
06	1 5/8"	7/8"	900	19	90	
07	2 1/8"	7/8"	1000	25	110	
08	2 1/8"	1 1/8"	1100	31	132	
09	2 1/8"	1 1/8"	1250	39	158	

Output variant 3

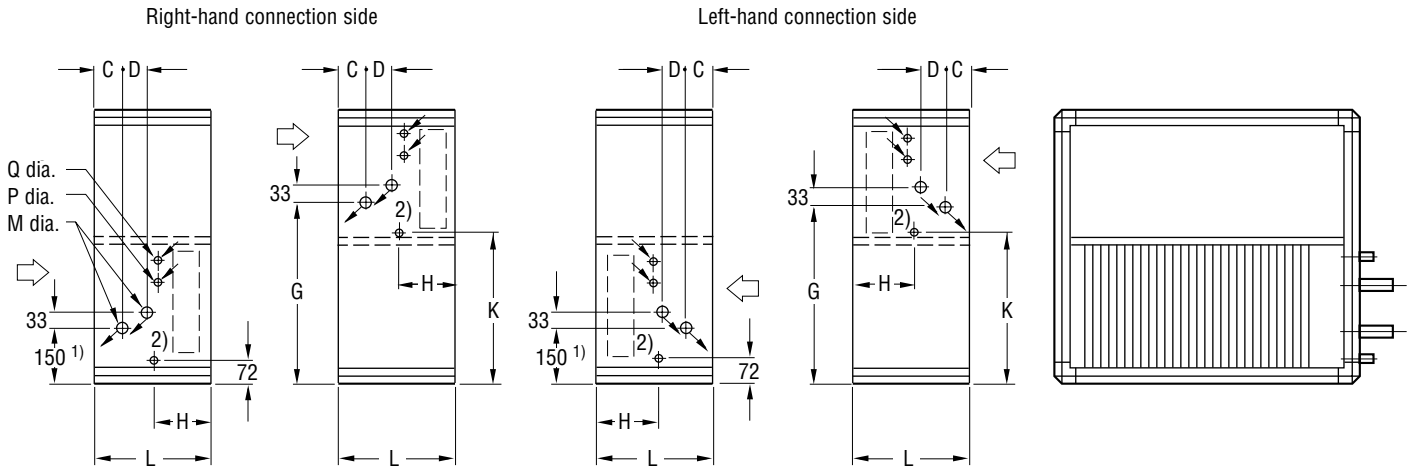
Size	M dia.	Output variant 3			Volume, l	Wgt., kg Cu/Al
		P dia.	G			
01	1 1/8"	5/8"	484	3	22	
02	1 1/8"	5/8"	550	4	26	
03	1 1/8"	5/8"	650	5	33	
04	1 1/8"	7/8"	700	8	44	
05	1 3/8"	7/8"	800	11	56	
06	1 5/8"	7/8"	900	15	76	
07	1 5/8"	7/8"	1000	20	92	
08	1 5/8"	7/8"	1100	24	110	
09	2 1/8"	1 1/8"	1250	30	131	

Output variant 6

Size	M dia.	Output variant 6			Volume, l	Wgt., kg Cu/Al
		P dia.	G			
01	1 1/8"	5/8"	484	5	31	
02	1 1/8"	5/8"	550	7	37	
03	1 1/8"	7/8"	650	10	49	
04	1 3/8"	7/8"	700	15	67	
05	1 5/8"	7/8"	800	21	89	
06	2 1/8"	7/8"	900	28	118	
07	2 1/8"	1 1/8"	1000	37	145	
08	–	–	–	–	–	
09	–	–	–	–	–	

Pipe connections

ECNP Air cooler for evaporative refrigerant, 2 output stages, 1/2 + 1/2. All dimensions in mm
 Size 03, output variants 3, 4 and 6, and sizes 04–09 output variants 2, 3, 4 and 6



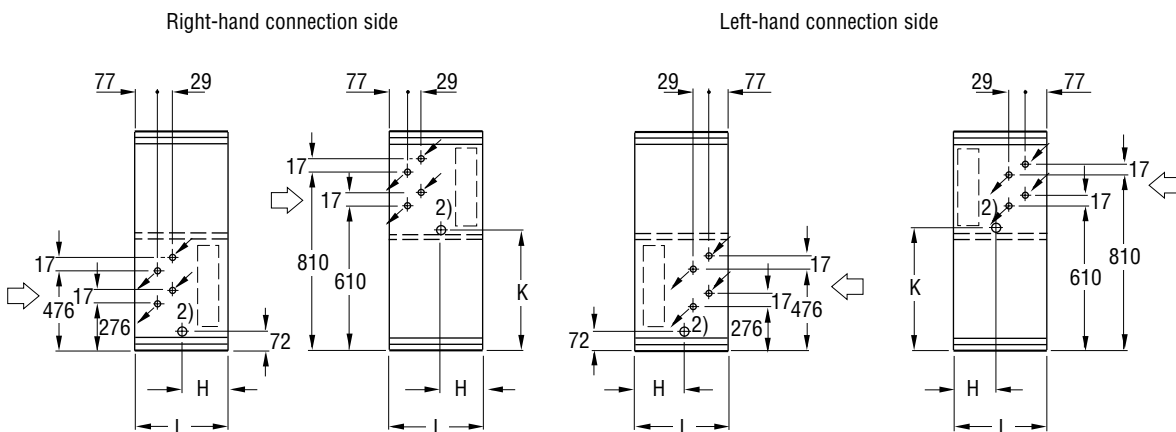
- 1) For size 01 = 144 mm.
- 2) 32 mm o.d. drain connection

For dimensions, volumes and weights, see next page.

Size	K
03	572
04	622
05	722
06	822
07	922
08	1022
09	1172

Size	without droplet eliminator		with droplet eliminator		C	
	g = 0		g = 1			
	L	H	L	H		
03–04	300	78	500	193	77	Output variant c = 2, 3
05–09	400	80	500	185	100	Output variant c = 2–6
03–04	400	80	500	185	77	Output variant c = 4, 6

Size 03, output variant 2



All refrigerant connections 12.2 mm dia.

Pipe connections

ECNP Air cooler for evaporative refrigerant, 2 output stages, 1/2 + 1/2

Output variant 2

Size	Output variant 2						Wgt., kg Cu/Al
	D	G	M dia.	P dia.	Q dia.	Volume, l	
01	–	–	–	–	–	–	–
02	–	–	–	–	–	–	–
03	1)	1)	1)	1)	1)	4	28
04	29	700	1 1/8"	5/8"	5/8"	5	36
05	29	800	1 1/8"	5/8"	5/8"	8	45
06	29	900	1 1/8"	7/8"	5/8"	10	61
07	36	1000	1 3/8"	7/8"	7/8"	13	73
08	36	1100	1 3/8"	7/8"	7/8"	16	87
09	36	1250	1 3/8"	7/8"	7/8"	20	103

Output variant 3

Size	Output variant 3						Wgt., kg Cu/Al
	D	G	M dia.	P dia.	Q dia.	Volume, l	
01	–	–	–	–	–	–	–
02	–	–	–	–	–	–	–
03	–	–	–	–	–	–	–
04	29	700	1 1/8"	5/8"	5/8"	8	44
05	29	800	1 1/8"	5/8"	5/8"	11	56
06	29	900	1 1/8"	7/8"	5/8"	15	76
07	36	1000	1 3/8"	7/8"	7/8"	20	92
08	36	1100	1 3/8"	7/8"	7/8"	24	110
09	43	1250	1 5/8"	7/8"	7/8"	30	131

Output variant 4

Size	Output variant 4						Wgt., kg Cu/Al
	D	G	M dia.	P dia.	Q dia.	Volume, l	
01	–	–	–	–	–	–	–
02	–	–	–	–	–	–	–
03	29	650	1 1/8"	5/8"	5/8"	7	38
04	29	700	1 1/8"	5/8"	5/8"	10	51
05	29	800	1 1/8"	5/8"	5/8"	15	68
06	29	900	1 1/8"	7/8"	5/8"	19	90
07	36	1000	1 3/8"	7/8"	7/8"	25	110
08	36	1100	1 3/8"	7/8"	7/8"	31	132
09	43	1250	1 5/8"	7/8"	7/8"	39	158

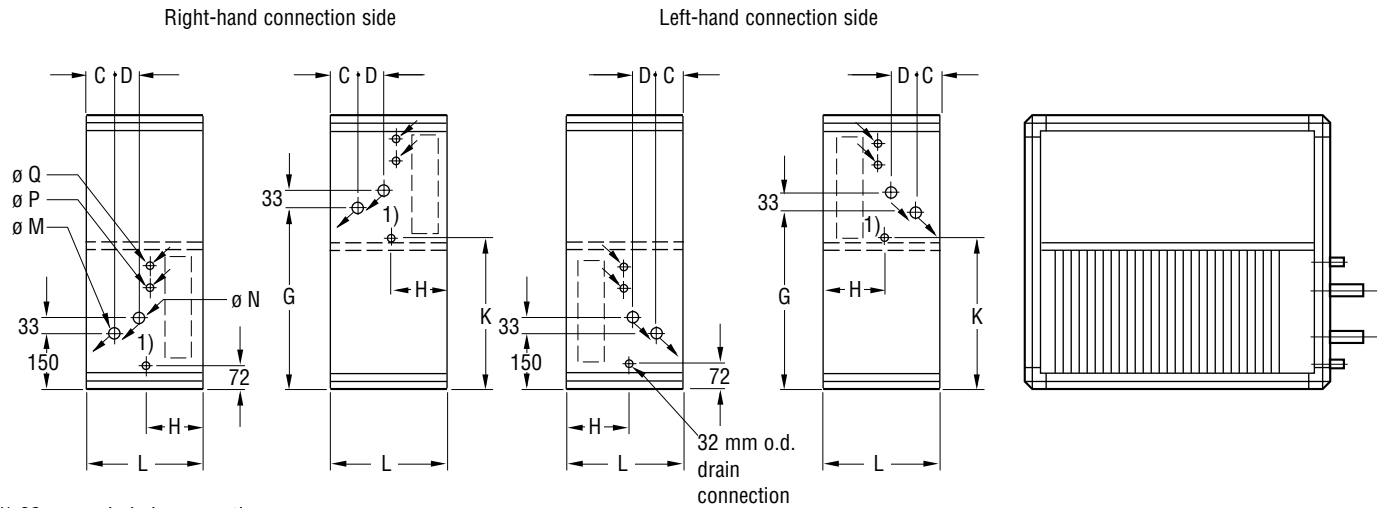
Output variant 6

Size	Output variant 6						Wgt., kg Cu/Al
	D	G	M dia.	P dia.	Q dia.	Volume, l	
01	–	–	–	–	–	–	–
02	–	–	–	–	–	–	–
03	29	650	1 1/8"	5/8"	5/8"	10	49
04	29	700	1 1/8"	5/8"	5/8"	15	67
05	36	800	1 1/8"	7/8"	7/8"	21	89
06	36	900	1 3/8"	7/8"	7/8"	28	118
07	36	1000	1 3/8"	7/8"	7/8"	37	145
08	43	1100	1 5/8"	7/8"	7/8"	46	175
09	43	1250	1 5/8"	7/8"	7/8"	57	211

1) See dimensioned figure for size 03, output variant 2 on preceding page.

Pipe connections

ECNP Air cooler for evaporative refrigerant, 2 output stages 1/3 + 2/3. All dimensions in mm



1) 32 mm o.d. drain connection

Size	K	without droplet eliminator		with droplet eliminator		C	
		g = 0		g = 1			
		L	H	L	H		
04	622	300	78	500	193	77	Output variant c = 2,3
05-09	722	400	80	500	185	100	Output variant c = 2-6
08	1022						
09	1172						
04		400	80	500	185	77	Output variant c = 4, 6

Output variant 2

Size	Output variant 2							Wgt., kg Cu/Al
	D	G	ø M	N dia.	P dia.	Q dia.	Volume, l	
04	-	-	-	-	-	-	-	-
05	-	-	-	-	-	-	-	-
06	34	900	1 3/8"	1 1/8"	7/8"	5/8"	10	61
07	34	1000	1 3/8"	1 1/8"	7/8"	5/8"	13	73
08	34	1100	1 3/8"	1 1/8"	7/8"	5/8"	16	87
09	38	1250	1 5/8"	1 1/8"	7/8"	5/8"	20	103

Output variant 3

Size	Output variant 3							Wgt., kg Cu/Al
	D	G	M dia.	N dia.	P dia.	Q dia.	Volume, l	
04	29	700	1 1/8"	1 1/8"	5/8"	5/8"	8	44
05	29	800	1 1/8"	1 1/8"	5/8"	5/8"	11	56
06	34	900	1 3/8"	1 1/8"	7/8"	5/8"	15	76
07	34	1000	1 3/8"	1 1/8"	7/8"	5/8"	20	92
08	34	1100	1 3/8"	1 1/8"	7/8"	5/8"	24	110
09	40	1250	1 5/8"	1 3/8"	7/8"	7/8"	30	131

Output variant 4

Size	Output variant 4							Wgt., kg Cu/Al
	D	G	M dia.	N dia.	P dia.	Q dia.	Volume, l	
04	29	700	1 1/8"	1 1/8"	5/8"	5/8"	10	51
05	34	800	1 3/8"	1 1/8"	7/8"	5/8"	15	68
06	34	900	1 3/8"	1 1/8"	7/8"	5/8"	19	90
07	38	1000	1 5/8"	1 1/8"	7/8"	5/8"	25	110
08	38	1100	1 5/8"	1 1/8"	7/8"	7/8"	31	132
09	40	1250	1 5/8"	1 3/8"	7/8"	7/8"	39	158

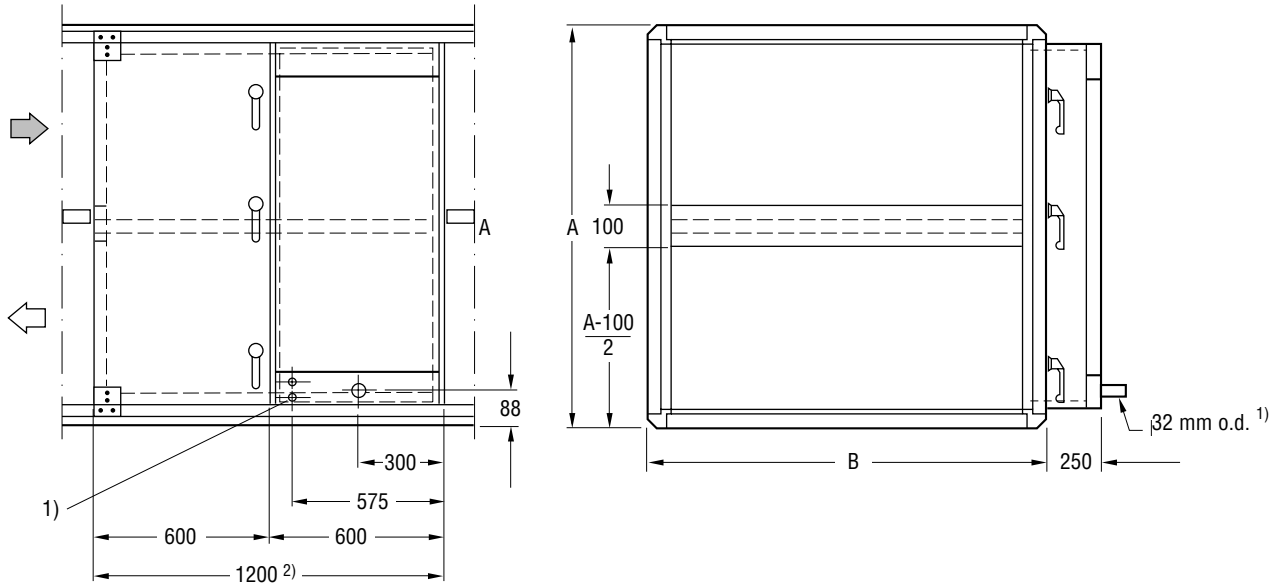
Output variant 6

Size	Output variant 6							Wgt., kg Cu/Al
	D	G	M dia.	N dia.	P dia.	Q dia.	Volume, l	
04	-	-	-	-	-	-	-	-
05	34	800	1 3/8"	1 1/8"	7/8"	5/8"	21	89
06	38	900	1 5/8"	1 1/8"	7/8"	5/8"	28	118
07	38	1000	1 5/8"	1 1/8"	7/8"	7/8"	37	145
08	50	1100	2 1/8"	1 3/8"	1 1/8"	7/8"	46	175
09	50	1250	2 1/8"	1 3/8"	1 1/8"	7/8"	57	211

Pipe connections

ECKA Cooling Unit

All dimensions in mm



- 1) 32 mm o.d. drain pipe
- 2) 18 mm o.d. Cu connection pipe for the water-cooled condenser, if any.
- 3) The length 1200 is for the block without the joints. Add 104 mm for the joints.

Size	A	B	Weight, kg		
			Output variant 1	Output variant 2	Output variant 3
03	1074	1004	215	227	–
04	1224	1204	250	261	271
05	1474	1404	308	319	382
06	1674	1604	397	460	471
07	1874	1804	512	523	595
08	2074	2004	594	666	748
09	2324	2304	737	819	837